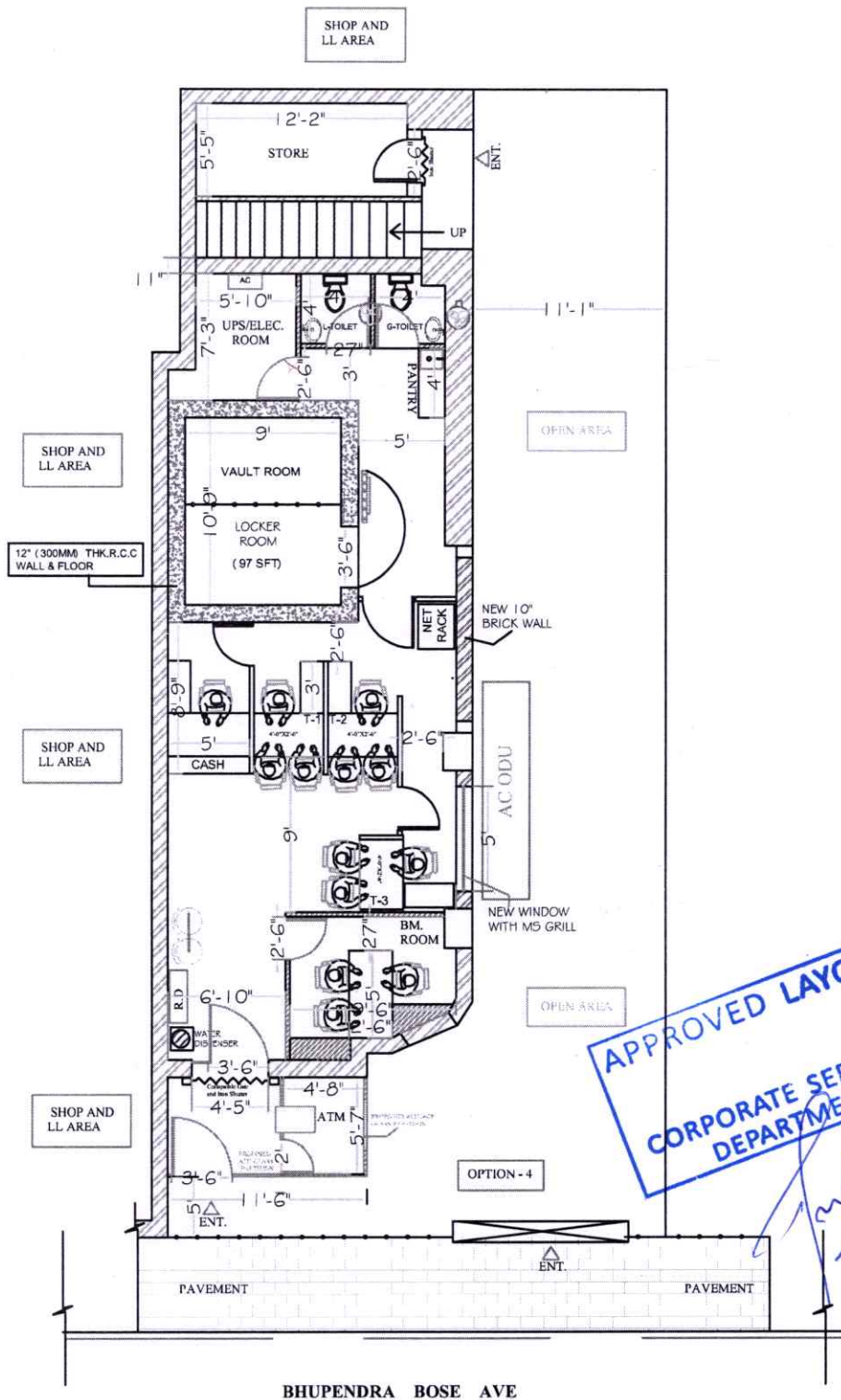






PRODUCED BY AN AUTODESK EDUCATIONAL PRODUCT

PRODUCED BY AN AUTODESK EDUCATIONAL PRODUCT

PRODUCED BY AN AUTODESK EDUCATIONAL PRODUCT



LEGEND :		 Existing Wall	 Paneling	 Partition wall		
Total Area = 845 Sft (APPROX) including ATM.			Ceiling Ht.- 8'-6" (approx)		REV-3	
NOTE: 1. Dimensions not to be scaled. Only written dimensions to be followed. 2. This drawing is for approval only. Executions shall not be carried out on the basis of this drawing. 3. Drawing must be sealed with the appropriate seal/revision. If required minor changes/adjustments with respect to the right for seal.			FEDERAL BANK			
			TITLE : PROPOSED INTERIOR PLAN			
			SITE ADDRESS : 59,B.B.AVENUE,SHYAMBAZAR,KOLKATA			
STRUCWELL CONSTRUCTIONS 812D BEADON STREET,KOLKATA-700006 TEL: 98201 21111			DRAWING NO. : STRUC/FED/SHYAMBAZAR / 2024 DRAWN BY : S. DAS DATE : 21.08.2024 SCALE : NTS			

PRODUCED BY AN AUTODESK EDUCATIONAL PRODUCT

APPROVED LAYOUT
CORPORATE SERVICE
DEPARTMENT